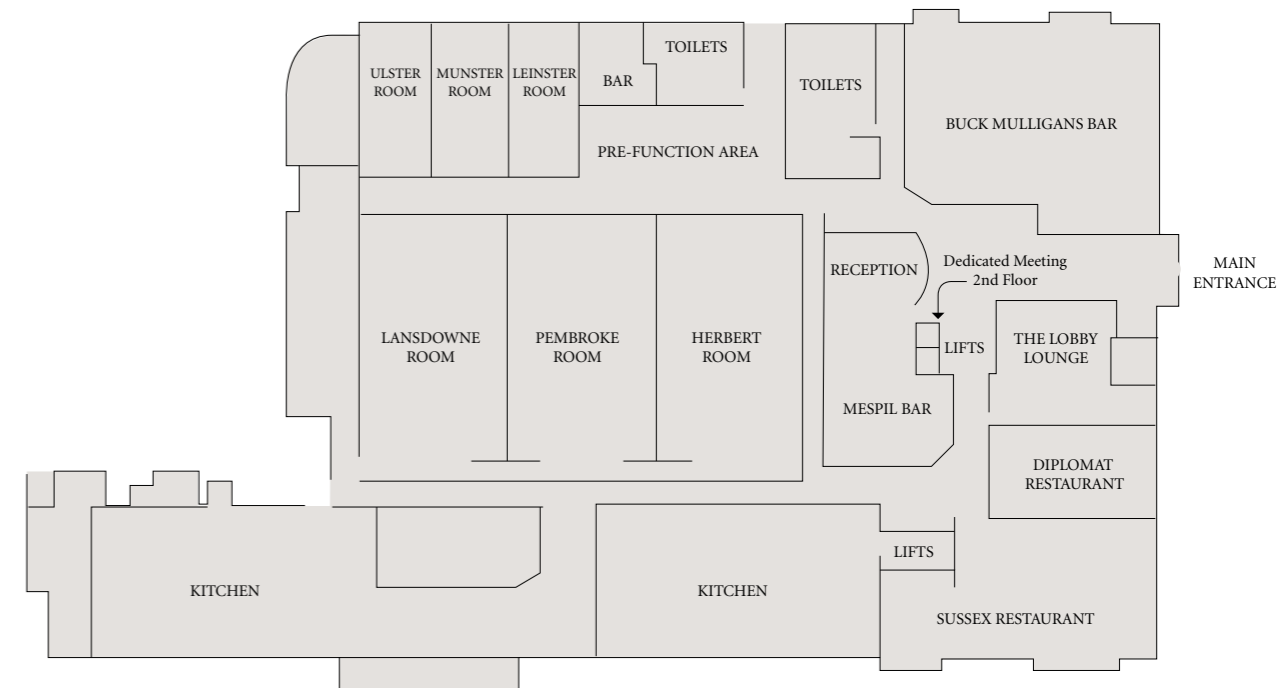


- KEY**
- Telephone (T)
 - ISDN Line Socket (IS)
 - Electricity Socket (E)
 - Air-Conditioning Controls (AC)
 - T.V. Sockets/Points (TV)
 - Microphone Point (M)
 - 3 Phase Power (3P)
 - Lighting Controls (LC)
 - Emergency Exit (EE)
 - Fire Exit (FE)
 - Cam Point (CAM)
 - Wireless LAN (WL)
 - ADSL (AD)

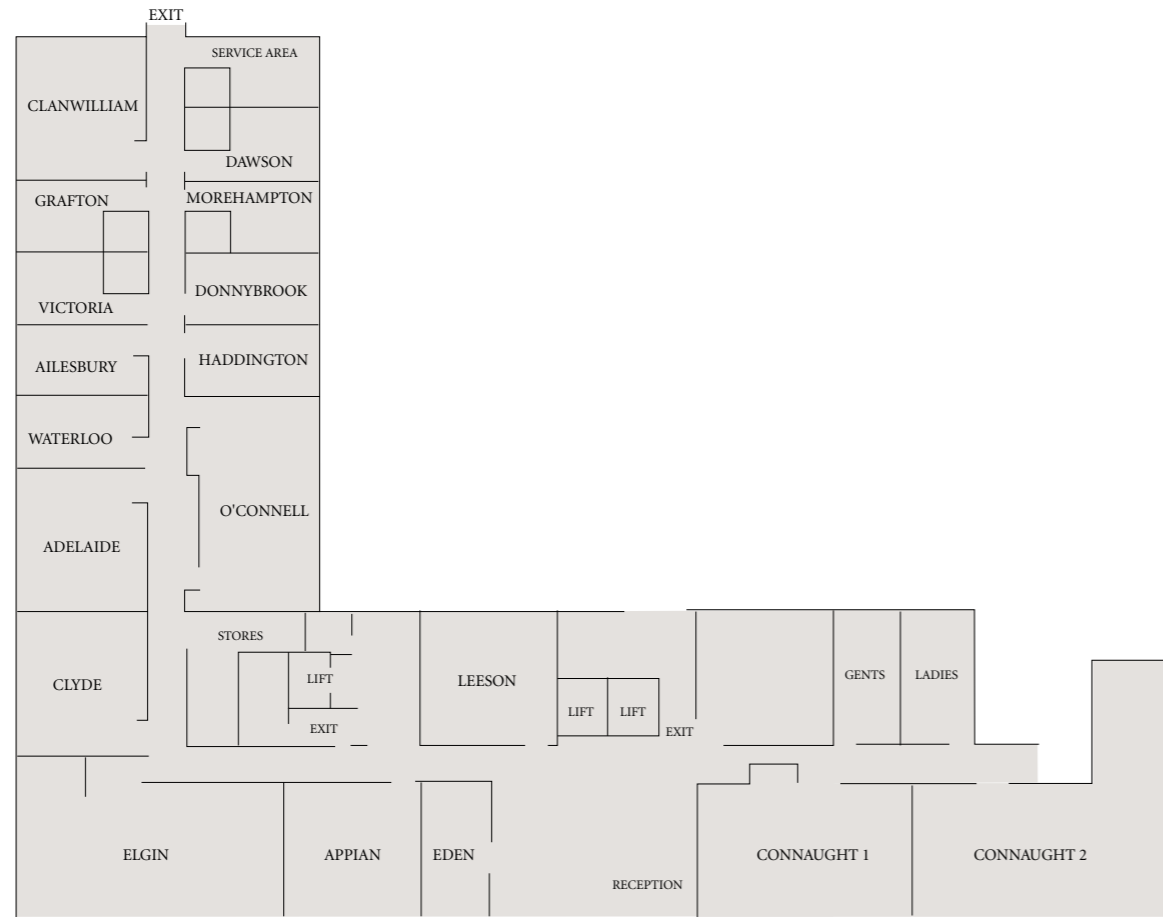
Room	Floor Area (Sq. m)	Ceiling Height	Dimensions (m)	Theatre	Classroom	Boardroom	U-Shape	Dinner Dance	Dinner	Buffet
BALLROOM	2106	5.7	45.9 x 45.9	-	-	-	-	1500	-	-
LANSDOWNE ROOM	413	5.7	15.3x27.1	400	200	-	60	200	280	400
PEMBROKE ROOM	413	5.7	15.3x27.1	400	200	-	60	200	280	400
HERBERT ROOM	413	5.7	15.3x27.1	400	200	-	60	-	280	400
FITZWILLIAM SUITES	362	4.2	22.9x15.8	-	-	-	-	-	180	300
ULSTER ROOM	121	4.2	7.65x15.8	100	60	40	40	-	60	80/100
MUNSTER ROOM	121	4.2	7.65x15.8	100	60	40	40	-	60	80/100
LEINSTER ROOM	121	4.2	7.65x15.8	100	60	40	40	-	60	80/100
CONCOURSE	216	4.2	21x10.3	-	-	-	-	-	-	-

Room	Air Conditioning	3 Phase Power	Sound System	Blackout	Natural Daylight	Dimmers	Chandeliers
LANSDOWNE ROOM	Yes	Yes	Yes	Yes	No	Yes	No
PEMBROKE ROOM	Yes	Yes	Yes	Yes	No	Yes	No
HERBERT ROOM	Yes	Yes	Yes	Yes	No	Yes	No
FITZWILLIAM SUITES	Yes	Yes	Yes	Yes	No	Yes	No
ULSTER ROOM	Yes	Yes	Yes	Yes	Yes	Yes	No
MUNSTER ROOM	Yes	Yes	Yes	Yes	Yes	Yes	No
LEINSTER ROOM	Yes	Yes	Yes	Yes	Yes	Yes	No

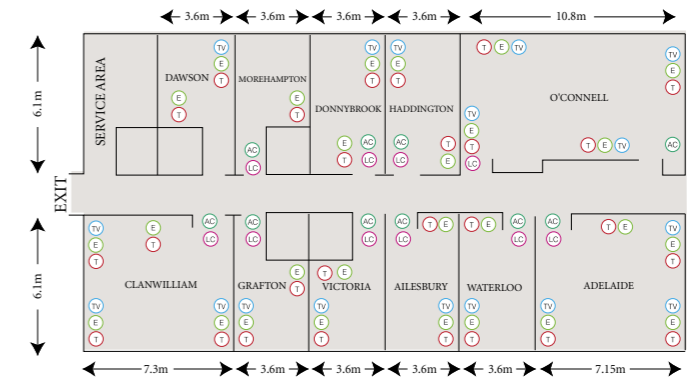
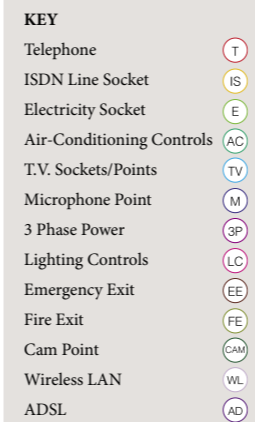
THE BURLINGTON® HOTEL



Room	Floor Area (Sq. m)	Ceiling Height	Dimensions (m)	Theatre	Classroom	Boardroom	U-Shape	Dinner Dance	Dinner	Buffet
FITZWILLIAM HALL	1240	5.7	45.7x27.1	1200	600	-	-	1200	850	1050
LANSDOWNE ROOM	413	5.7	15.3x27.1	400	200	-	60	200	280	400
PEMBROKE ROOM	413	5.7	15.3x27.1	400	200	-	60	200	280	400
HERBERT ROOM	413	5.7	15.3x27.1	400	200	-	60	-	280	400
FITZWILLIAM SUITES	362	4.2	22.9x15.8	-	-	-	-	-	180	300
ULSTER ROOM	121	4.2	7.65x15.8	100	60	40	40	-	60	80/100
MUNSTER ROOM	120	4.2	7.6x15.8	100	60	40	40	-	60	80/100
LEINSTER ROOM	121	4.2	7.65x15.8	100	60	40	40	-	60	80/100

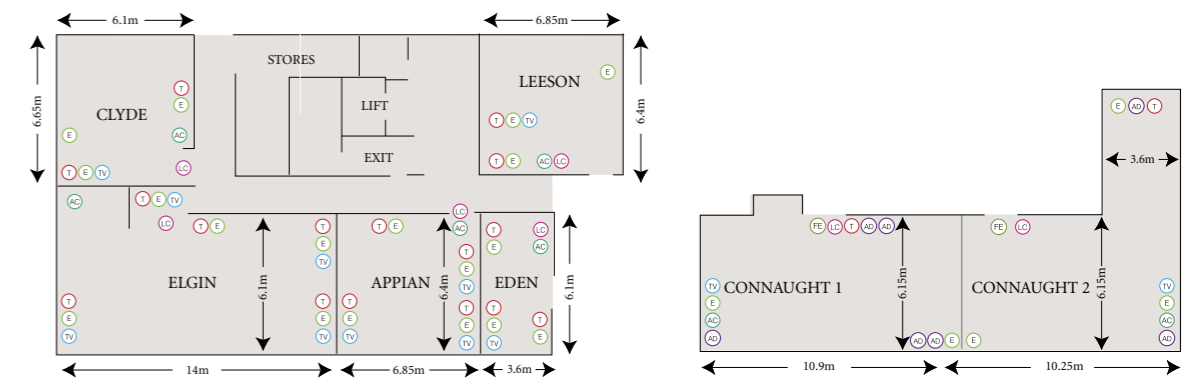


Room	Length (m)	Width (m)	Height (m)	Theatre	Classroom	Boardroom
EDEN	6.1	3.6	2.4	10	-	-
LEESON	6.4	6.85	2.5	30	15	18
APPIAN	6.4	6.85	2.5	30	15	18
ELGIN	14	6.1	2.5	70	40	30
CLYDE	6.65	6.1	2.5	30	15	18
O'CONNELL	10.8	6.1	2.5	60	35	28
ADELAIDE	7.15	6.1	2.5	30	15	18
WATERLOO	6.1	3.6	2.5	12	-	10
AILESBUURY	6.1	3.6	2.5	12	-	10
HADDINGTON	6.1	3.6	2.5	12	-	10
VICTORIA	6.1	3.6	2.5	10	-	8
DONNYBROOK	6.1	3.6	2.5	12	-	10
GRAFTON	6.1	3.6	2.5	10	-	8
MOREHAMPTON	6.1	3.6	2.5	10	-	8
DAWSON	6.1	3.6	2.5	10	-	8
CLANWILLIAM	7.3	6.1	2.5	30	15	18



Room	Length (m)	Width (m)	Height (m)	Theatre	Classroom	Boardroom
O'CONNELL	10.8	6.1	2.5	60	35	28
ADELAIDE	7.15	6.1	2.5	30	15	18
WATERLOO	6.1	3.6	2.5	12	-	10
AILESBUURY	6.1	3.6	2.5	12	-	10
HADDINGTON	6.1	3.6	2.5	12	-	10
VICTORIA	6.1	3.6	2.5	10	-	8
DONNYBROOK	6.1	3.6	2.5	12	-	10
GRAFTON	6.1	3.6	2.5	10	-	8
MOREHAMPTON	6.1	3.6	2.5	10	-	8
DAWSON	6.1	3.6	2.5	10	-	8
CLANWILLIAM	7.3	6.1	2.5	30	15	18

Room	Air Conditioning	3 Phase Power	Sound System	Blackout	Natural Daylight	Dimmers	Chandeliers
O'CONNELL	Yes	-	-	Yes	Yes	Yes	-
ADELAIDE	Yes	-	-	Yes	Yes	Yes	-
WATERLOO	Yes	-	-	Yes	Yes	Yes	-
AILESBUURY	Yes	-	-	Yes	Yes	Yes	-
HADDINGTON	Yes	-	-	Yes	Yes	Yes	-
VICTORIA	Yes	-	-	Yes	Yes	Yes	-
DONNYBROOK	Yes	-	-	Yes	Yes	Yes	-
GRAFTON	Yes	-	-	Yes	Yes	Yes	-
MOREHAMPTON	Yes	-	-	Yes	Yes	Yes	-
DAWSON	Yes	-	-	Yes	Yes	Yes	-
CLANWILLIAM	Yes	-	-	Yes	Yes	Yes	-



Room	Length (m)	Width (m)	Height (m)	Theatre	Classroom	Boardroom
EDEN	6.1	3.6	2.4	10	-	-
LEESON	6.4	6.85	2.5	30	15	18
APPIAN	6.4	6.85	2.5	30	15	18
EGLIN	14	6.1	2.5	70	40	30
CLYDE	6.65	6.1	2.5	30	15	18
CONNAUGHT	21.6	12.2	2.4	100	60	60
CONNAUGHT 1	10.8	6.1	2.4	60	30	18
CONNAUGHT 2	10.8	6.1	2.4	60	30	18

Room	Air Conditioning	3 Phase Power	Sound System	Blackout	Natural Daylight	Dimmers	Chandeliers
EDEN	Yes	-	-	Yes	Yes	Yes	-
LEESON	Yes	-	-	Yes	Yes	Yes	-
APPIAN	Yes	-	-	Yes	Yes	Yes	-
EGLIN	Yes	-	-	Yes	Yes	Yes	-
CLYDE	Yes	-	-	Yes	Yes	Yes	-
CONNAUGHT	Yes	-	-	Yes	Yes	Yes	-
CONNAUGHT 1	Yes	-	-	Yes	Yes	Yes	-
CONNAUGHT 2	Yes	-	-	Yes	Yes	Yes	-